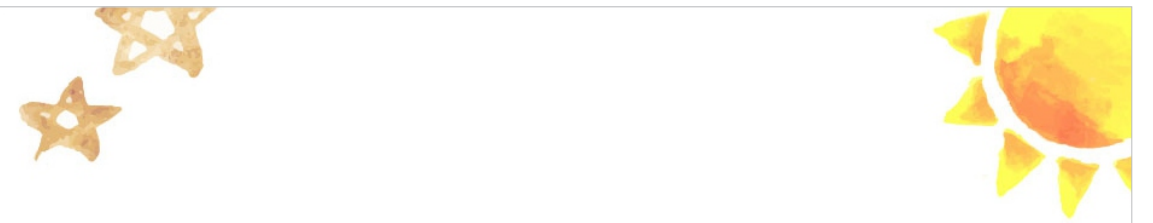


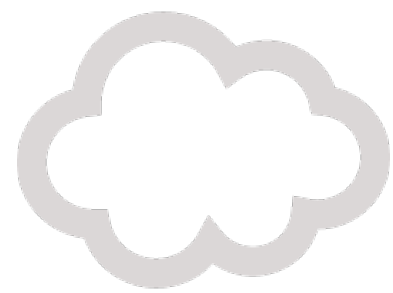


Row House No.5, Ashtavinayak Colony, S. NO. 33/4,
Kamthe Patil Nagar, Yewalewadi, Pune-411048
Phone: +91 932-560-0595
Email: info@gigglesandscribbles.com



CELEBRATE THE COLOURS OF CHILDHOOD





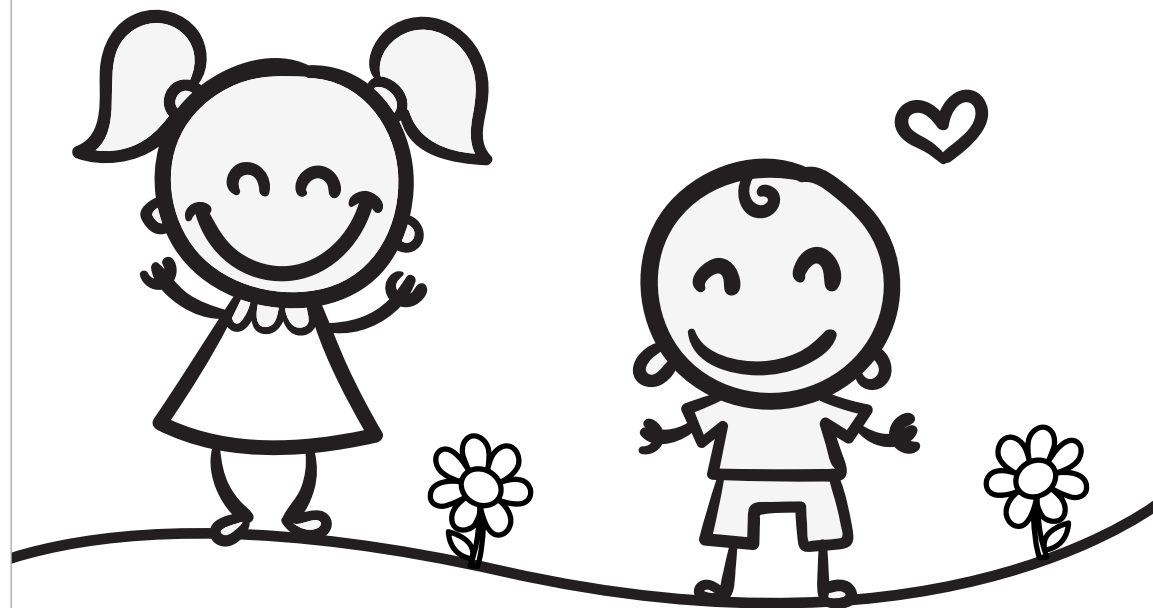
LEARNING

NURTURING



EXPRESSING

HAPPY



ABOUT US

The GnS Curriculum is high-quality, research-based, child-centric early learning program. The curriculum is based on the psychological theories of development that offer a stimulating learning program for the children to explore and learn under the guidance of teachers.

The curriculum is highly structured, incorporating sessions necessary for the holistic development of the child with focus on both structured and unstructured play. The curriculum emphasizes on learning through exploration and provides ample opportunities for child-directed learning.

GnS provides the educators with the resources to plan and implement a child-directed classroom where the teachers constantly facilitate learning instead of initiating the learning. The educators are provided with a structured lesson plan where they facilitate guided play; discovery and exploration-based activities. The curriculum combines cooperative learning structures and differentiated instructions to create the GnS method of learning.

SKILL-BASED LEARNING



The GnS curriculum constitutes of age-appropriate lesson plan with learning materials, teaching aids, and a symates to assess a child's progress. The activities are designed to aid overall development of a child, including the cognitive, language, social, emotional and physical areas of development. The curriculum also provides a cultural context to the learning thereby ensuring each child is rendered appropriate early learning opportunities. Each activity explored in the curriculum is designed in order to develop one or more of the 16 key developmental skills.

SCIENCE EXPERIMENTS AND MATES ACTIVITIES

Introducing for the first time a new concept of MATES, a co-curricular activities which boost critical thinking, problem solving and to create an end product.

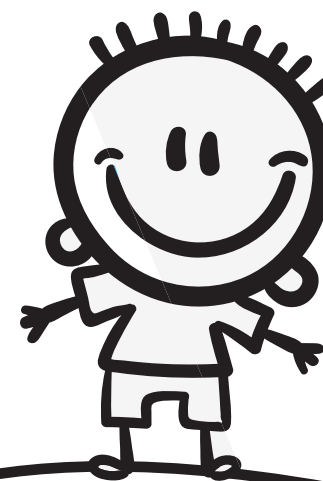
AGE GROUPS

Playgroup (1.5 yrs to 2.5 yrs)

Nursery (2.5yrs to 3.5 yrs)

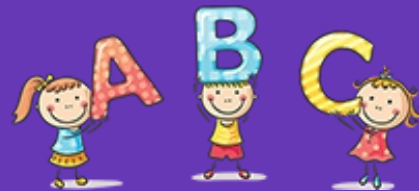
LKG (3.5 yrs to 4.5 yrs)

UKG (4.5 yrs to 5.5 yrs)





MONTHLY THEMES



A thematic method of learning emphasizes various concepts and skills through one specific theme. Key developmental skills are explored and developed through the themed activities. The playgroup program consists of 10 themes. Each month focuses on 3 colours and 1 shape. The nursery program consists of 10 themes. As a step-up from the playgroup, the nursery program focuses on 4 alphabets and 1 number. Thematic learning helps assimilate the learning through one theme that enables children to draw connections and learn by association.

Know Each Child's Progress

Parents can stay updated with their child's learning through the daily take-home materials, Monthly Journal and Development Evaluation card.

With our user-friendly mobile app, your parents can get the daily updates of the activities that their child has done.

Stay connected on FB, mobile app & WhatsApp.

OUR CURRICULUM

Research based learning Thematic
Approach Daily Activities/Materials
Domains of development



THEMATIC APPROACH

**Let's Connect to the real
time Scenarios**



Going to the Market



Nature Explorer



My Neighbourhood